



Starter – Ecosystems






1. What animals can you see in the image?

2. What type of ecosystem do you think this is?

3. Why do you think it is important for conservationists to track animals and their environment?

Activity 1 – You’re the volunteer

 <p>DLGovert.com 05-24-2011 15:41:30</p>	Species?	
	How many?	
	What behaviours do you see?	
 <p>Govert.com 07-27-2010 18:01:46</p>	Species?	
	How many?	
	What behaviours do you see?	
 <p>Govert 06.26.2011 13:54:09</p>	Species?	
	How many?	
	What behaviours do you see?	

Activity 1 – Think, pair, share

Thousands of **community volunteers** were recruited to label the data in this way. It could take **up to a year** from an image being captured to it being labelled, and longer before useful information could be presented to conservationists.

Question 1. What problems did you face in attempting to label the data?

Question 2. Why might the delay of a year be an issue for conservationists?

Activity 2 – Artificial intelligence

What is artificial intelligence?

Copy the definition into the space below.

Activity 3 – AI and the Serengeti

Think, pair, share

1. What data do you think was used to train the model designed to identify animals in the images?

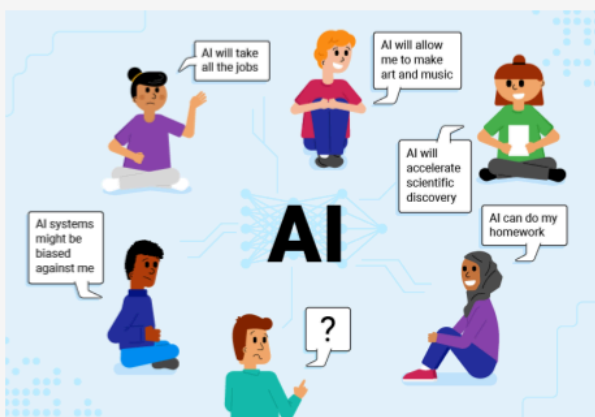
2. What advantages do you think there are of using an AI system instead of relying on human volunteers?

3. Who benefits from the predictions that are made?

Activity 4 – Impact of AI

Discussion: Impact of AI

- Work in a small group (as directed by your teacher)
- Study your concept cartoon
 - Discuss each statement
 - Decide which statement(s) you agree with
 - Give a reason for your choices
 - Challenge (respectfully) others in your group with different opinions



Plenary

1. Can you think of any other areas where it would be useful for scientists to use AI applications to make predictions? Write your ideas in the space below.

2. Make notes of anything you learned from the careers video in the space below.



This resource is licensed by the [Raspberry Pi Foundation](https://www.raspberrypi.org/) under a Creative Commons Attribution-NonCommercial-NoDerivatives 4.0 International Public License (CC BY-NC-ND 4.0). For more information on this licence, see creativecommons.org/licenses/by-nc-nd/4.0.